

PROGRESSIONS:
PEER-LED TEAM LEARNING



UMaine Mathematics Education Group
Department of Mathematics and Statistics



Workshop 4: Nicotine and Blood Alcohol Concentrations

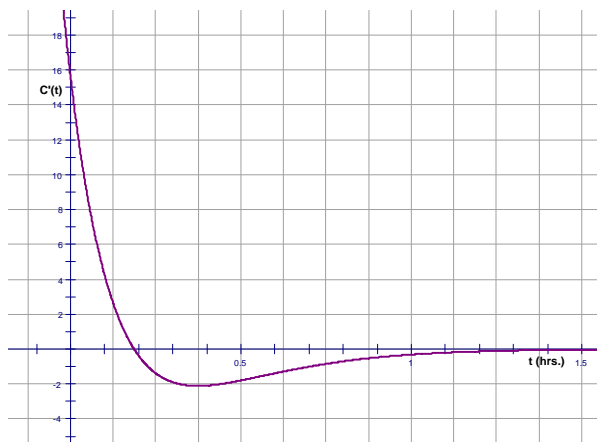
Modeling with Surge Functions

References:

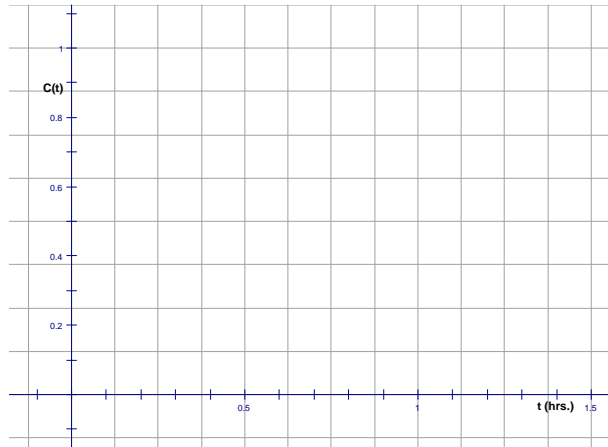
Smith, Minton, Calculus, 2nd ed, 2002, McGraw Hill, Sections 2.2, pg. 169, 2.4, pg. 187, 2.6 pgs. 205-208, 2.7, pgs. 213-218, and sections 3.3, 3.4, and 3.5

Taken in part from Nicotine Function: Clinical Pharmacology Online <http://www.cponline.gsm.com> and from National Institute on Alcohol Abuse and Alcoholism Publication no. 35, PH371 January 1997

Part I: Consider the graph of the rate of change of nicotine concentration in the blood over time, $C'(t)$, where t is measured in hours since smoking one cigarette and $C'(t)$ is measured in the milligrams per deciliter per hour.

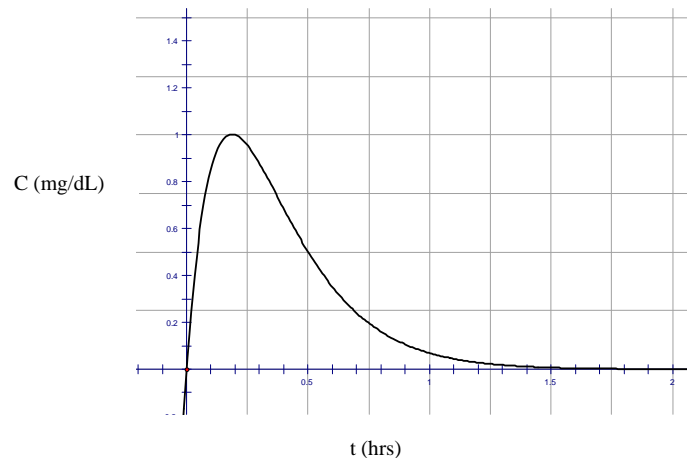


1. On the blank graph below, graph the concentration of nicotine in the blood as a function of time, assuming when $t = 0$ that $C = 0$ (at time 0, there is no nicotine in your blood).



2. Give this some thought...is the concavity of your graph correct? How can you tell?

3. The correct graph for $C(t)$ is below. If your graph was not correct, where did you go wrong and why?



4. Based on the graphs of $C(t)$ and $C'(t)$, estimate the following:

- Find the time, t , where the maximum concentration occurs.

- Find the slope of the tangent line to the curve of $C(t)$ at $t=0$.

5. Let's give some thought to the function for $C(t)$.

- a. What function would approximate $C(t)$ on the interval $[0,0.1]$?
 - b. What type of function would approximate $C(t)$ on the interval $[0.4,2]$?
6. The function graphed above is $C(t) = 14.6te^{-5.36t}$. Do the factors in this function correspond to the functions you described in 5a and 5b? Why or why not?
7. At what time is the nicotine leaving your body most rapidly? Answer:
- a. Using the graph of $C(t)$
 - b. Using the graph of $C'(t)$
 - c. Without using a graph (using calculus/algebra)

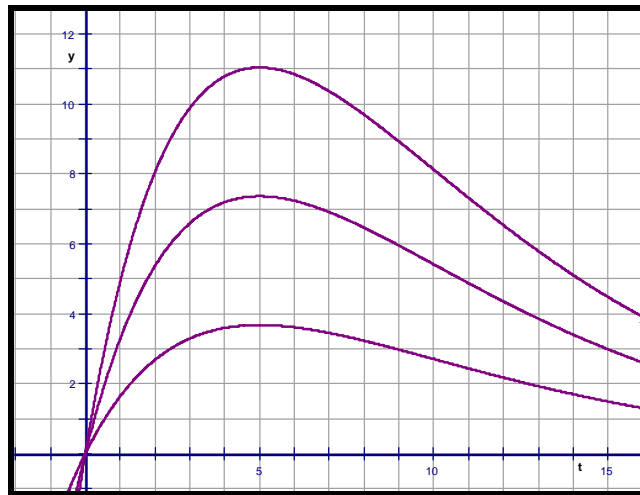
Part II: The functions of the form $y = Ate^{Bt}$ (like the above nicotine function $C(t)$) are called surge functions and display an initial approximate linear growth from zero that then (as t increases) become dominated by an exponential decay. Let's consider the general form of these functions, $y = Ate^{Bt}$.

1. On the graph below label the graphs of each of the following functions:

$$y_1 = 2te^{-0.2t}$$

$$y_2 = 4te^{-0.2t}$$

$$y_3 = 6te^{-0.2t}$$



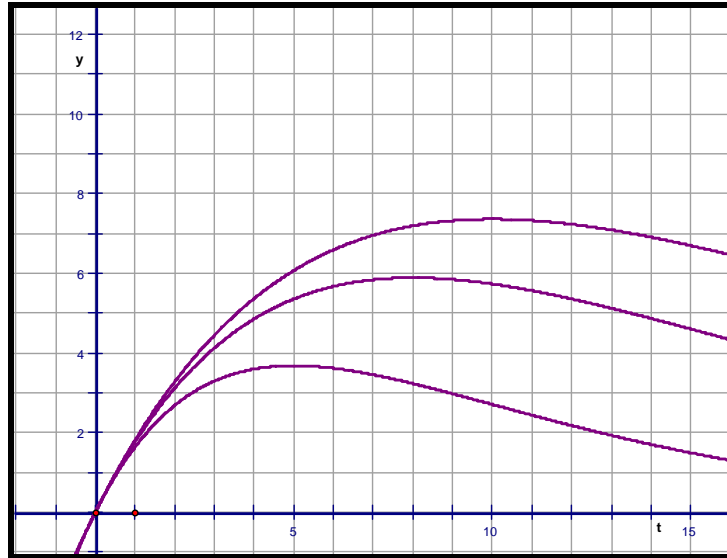
2. Briefly discuss what you notice about the shapes of these graphs and about what happens to the graphs as you change the parameter A in the equation $y = Ate^{Bt}$.
3. For each of the three given functions, use calculus to find the slope of the tangent to the graph at $t = 0$.
4. For the general equation, $y = Ate^{Bt}$, what is the slope of the tangent to the curve at 0?
5. Verify your answer in #4 using calculus.

6. On the graph below label the graphs of each of the following functions:

$$y_1 = 2te^{-(1/5)t}$$

$$y_2 = 2te^{-(1/8)t}$$

$$y_3 = 2te^{-(1/10)t}$$



7. Briefly discuss what you notice about the shapes of these graphs and about what happens to the graphs as you change the parameter B in the equation $y = Ate^{Bt}$.
8. For which values of t does it appear that these functions take on their maximum value?
9. For each of the three given functions, use calculus to find the slope of the tangent to the graph at those values of t for which the function is a maximum.

10. Summarize your findings in the table:

Function	Value of t for y_{\max}	Slope of tangent line at this point
$y = 2te^{-(1/5)t}$		
$y = 2te^{-(1/8)t}$		
$y = 2te^{-(1/10)t}$		
$y = Ate^{Bt}$		

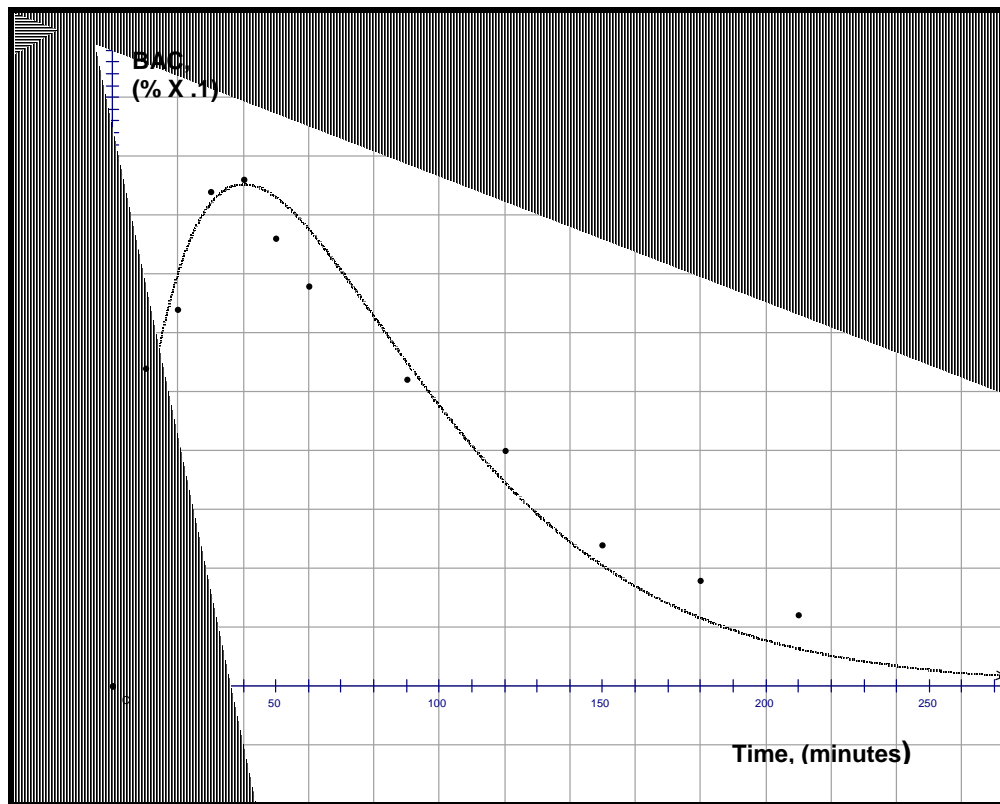
11. Let's revisit the surge function for nicotine levels, $C(t) = 14.6te^{-5.36t}$. Based on what we now know,

- At what time, t, does the maximum concentration occur?
- What is the slope of the tangent line to the curve of C(t) at t=0?
- How do your answers compare with the answers you estimated from the graphs in Part I, #4 (page 2)?

Part III: Now that we understand the A and B parameters in surge functions of the form $y = Ate^{Bt}$, let's examine blood alcohol level data and a possible surge function to model it.

The following data table shows the average of the values of Blood Alcohol Concentration (BAC) recorded over time for a group of male drinkers who rapidly consumed two drinks. For example, a value of 27 at a particular time means that the averages of the values of each participant's BAC at that time was .027%. The given data is plotted below, along with a possible mathematical model of the data in the form of a surge function.

Time (in minutes since the beginning of the drinking period)	0	10	20	30	40	50	60	90	120	150	180	210	240
Blood Alcohol Concentration (2 drinks)	0	27	32	42	43	38	34	26	20	12	9	6	2



1. Using what you have learned about surge functions, write a possible equation that would model this situation.
2. Do you think that this is a good model for the given data? Why or why not?

*Progressions: Peer-Led Team Learning
The Workshop Project Newsletter
Summer 2006, Volume 7, Issue 4*

David Gosser, Consulting Editor, gosser@sci.ccny.cuny.edu

AE Dreyfuss, Editor, aedreyfuss@aol.com

Paula Drewniany, Co-Editor, Calculus I Modules
drewniany@math.umaine.edu

Sue McGarry, Co-Editor, Calculus I Modules
mcgarry@math.umaine.edu

Jen Tyne, Co-Editor, Calculus I Modules
tyne@math.umaine.edu

The City College of New York
Marshak Science Building MR-1024
160 Convent Avenue, New York NY 10031

Phone: 212-650-5704 Fax: 212-650-8339

Email info@pltl.org Website: www.pltl.org

Reproduction of material appearing in *Progressions* is encouraged with appropriate citation (author, date, issue volume and number).

Progressions (ISSN 1539-1752—print; ISSN 1539-7483—online) is published four times a year by the PLTL Workshop Project.

This newsletter is supported by a grant from the National Science Foundation's Division of Undergraduate Education. The views expressed herein do not necessarily represent those of the National Science Foundation.